



PROJECT

ITEM NO:

QUANTITY:

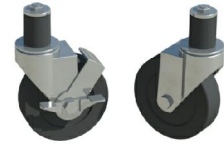
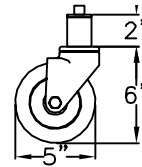
Accessories

DRAWERS				
MODEL#	DESCRIPTION	SIZE		
		D	L	H
SMTD-2014-24	For Tables 24" Deep	20"	16"	6"
SMTD-2014-30	For Tables 30" and 36" Deep			



NSF Certified

CASTERS	
MODEL#	DESCRIPTION
SMTC-5	Worktable Stem Casters, Fits standard 1 5/8" or 1 1/2" tubing, Set of 4 per box.



SMTC-5

SINK LEGS	
MODEL#	DESCRIPTION
SM-SLG18	Galvanized Steel Sink Legs with Plastic Adjustable Foot (Set of 4 per package)
SM-SLS18	Stainless Steel Sink Legs with Stainless Steel Adjustable Foot (Set of 4 per package)



TABLE LEGS	
MODEL#	DESCRIPTION
SM-TLG18	Galvanized Steel Table Legs with Plastic Adjustable Foot (Set of 4 per package)
SM-TLS18	Stainless Steel Table Legs with Stainless Steel Adjustable Foot (Set of 4 per package)

SCREWS FOR LEG	
MODEL#	DESCRIPTION
SM-SH18	Screws for Legs (Set of 12)



SMSH-18

HAND SINK WALL BRACKET	
MODEL#	DESCRIPTION
SM-HSB01	Replacement Hand Sink Wall Bracket



SM-HSB01

FRYER SPLASH GUARD	
MODEL#	DESCRIPTION
SMFS-1821	Universal Stainless Steel Splash Guard for Fryer Size: (20 1/2"d x 18"h)



SMFS-1821

Specifications subject to change without notice. All dimensions are typical (Tolerance 1/2").



SAPPHIRE MANUFACTURING
Tel: 718-543-2111
Fax: 718-543-2121

info@sapphiremanufacturing.com
WWW.SAPPHIREMANUFACTURING.COM

Rev. 11/16